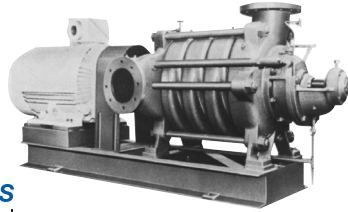


MULTI-STAGE VOLUTE PUMPS MS420

MS420



APPLICATIONS

- Building water supply
- City water supply
- Industrial water supply
- Fire fighting

FEATURES

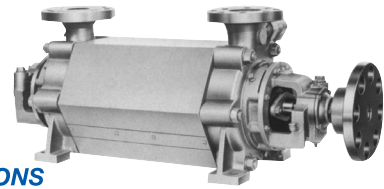
- Low noise operation.
- High efficiency over wide range.
- Thrust balance structure.

SPECIFICATIONS

Liquid handled	Fresh water	
Temperature	0~104°C	
Max suction pressure	0.4MPa(4kgf/cm ²)	
Construction	Impeller	Closed
	Shaft sealing	Gland packing
	Bearing	Ball-and-roller bearings (grease)
Materials	Casing	FC200/FC400
	Impeller	CAC406/FC200/SCS13
	Shaft	S35C/SUS630
Flange	JIS10K/JIS16K or JIS20K	

MULTI-STAGE TURBINE PUMPS MSS

MSS



APPLICATIONS

- Boiler feed water
- General high pressure service
- City water

FEATURES

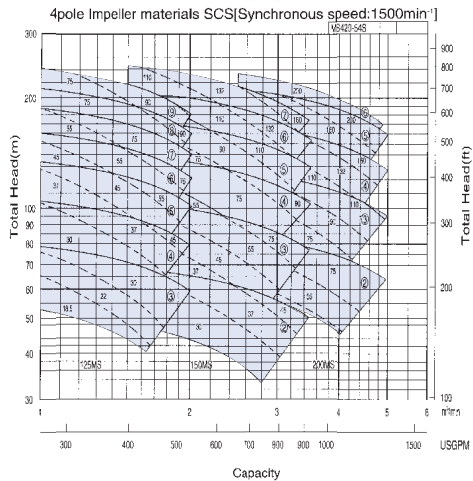
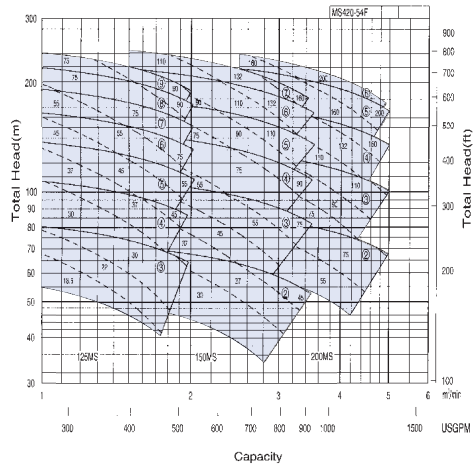
- High efficiency over wide range.
- High reliable components.
- Simple structure for easy maintenance.
- Low NPSH operation.

SPECIFICATIONS

Liquid handled	Fresh water, hot water	
Temperature	0~165°C	
Max suction pressure	0.8MPa(8kgf/cm ²)	
Construction	Impeller	Closed
	Shaft sealing	Gland packing, mechanical seal
	Bearing	Ball bearings (oil bath)
Materials	Casing	Suction:FCD540-K Intermediate:FCD540-K/SCPH21 Discharge:SCPH21
	Impeller	FCD540-K
	Shaft	SCM435
Flange	JIS10K/JIS20K, 30K, 40K	

SELECTION CHART

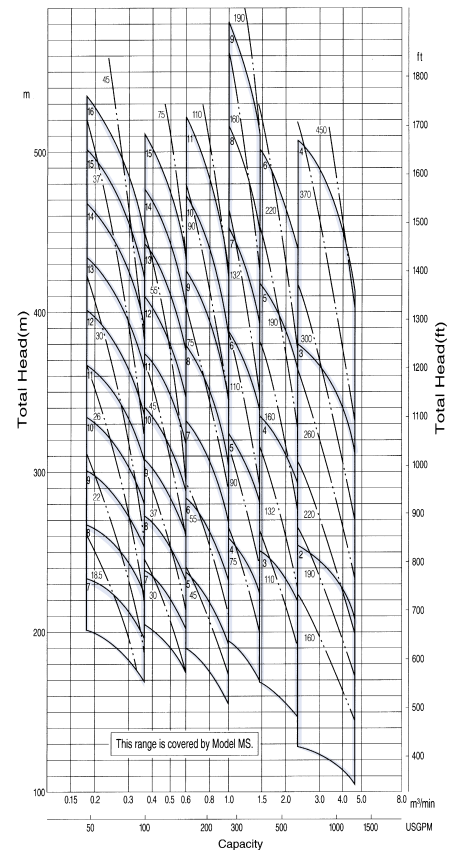
50Hz 4pole Impeller materials CAC406, FC200[Synchronous speed:1500min⁻¹]



SELECTION CHART

50Hz 2pole Impeller materials FCD[Synchronous speed:3000min⁻¹]

50 X 40 65 X 50 80 X 65 100 X 80 125 X 100 150 X 125



Notes: The encircled numbers in the areas enclosed by unbroken lines indicate the number of stages, and the other numbers in the areas enclosed by broken lines indicate the motor capacity in kW.

Notes: Numbers in bold type indicate the number of stages, and number in fine type indicate motor capacity in kW.