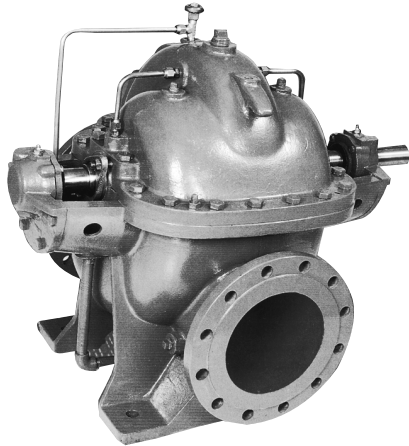


## CS/CN



### APPLICATIONS

- Water supply
- Hot and cold water circulation
- For cooling tower
- Irrigation
- Industrial use
- Drainage

### SPECIFICATIONS

Description		Standard	Option
Model		CS, CN	
Liquid	Type of liquid	Clean Water, Industrial Water, River Water	
Handled	Temperature	Below 80°C (176°F)	81°C ~ 120°C (177°F-248°F) (only applicable for Mechanical Seal Models)
Max. Positive Suction Pressure		2 kgf/cm <sup>2</sup> G (0.196 Mpa) or (Max. Allowable pressure) - (Shutoff pressure), whichever is smaller	7 kgf/cm <sup>2</sup> G (0.714 Mpa) or (Max. Allowable pressure) - (Shutoff pressure), whichever is smaller
Installation		Indoor, Outdoor	
Construction	Shaft Seal	Gland Packing	Mechanical Seal
	Bearing	Ball Bearing	
	Lubrication	Grease	
Material	Casing	Cast Iron	
	Impeller	Bronze - except for CKN models 304 Stainless Steel - for CKN Models only	
	Shaft	403 Stainless Steel	
	Shaft sleeve	Bronze	
Flange	Suction	JIS 16 KRF	
	Discharge	JIS 16 KRF	
Accessories			
Standard		Air vent piping, Drain piping, Gland sealing water piping.	
Optional		Pressure gauge, Common base, Anchor bolts, Shaft coupling, Coupling guard.	

### FEATURES

- Compact design for ease of installation and permits minimum maintenance.
- Axially split casing allows the easy removal of the top casing for inspection and service.
- A wider range of performance with head up to 150 m.
- High speed drives available.
- Anti-corrosion materials used on the rotating parts.
- High quality sealed bearing housing provided high durability.
- Gland packing can be changed to mechanical seal.

